

INSULATED FORMWORK SLABS

FOR HIGH-PERFORMANCE CONSTRUCTION

- EXCEPTIONAL THERMAL INSULATION

- OVERLOADS UP TO 600 KG/M² AND MORE

- CLEAR SPAN OF 8 M AND MORE

- EASY TO INSTALL

R=9.45
m².K/W*

A



EUROMAC2
CONSTRUCTIONS PERFORMANTES

CSTB



EUROMAC2 INSULATED FORMWORK SLABS



MADE-TO-MEASURE

MANUFACTURED AND DELIVERED
TO DESIRED LENGTH



OVERLOAD RESISTANCE

UP TO 600 KG / M²



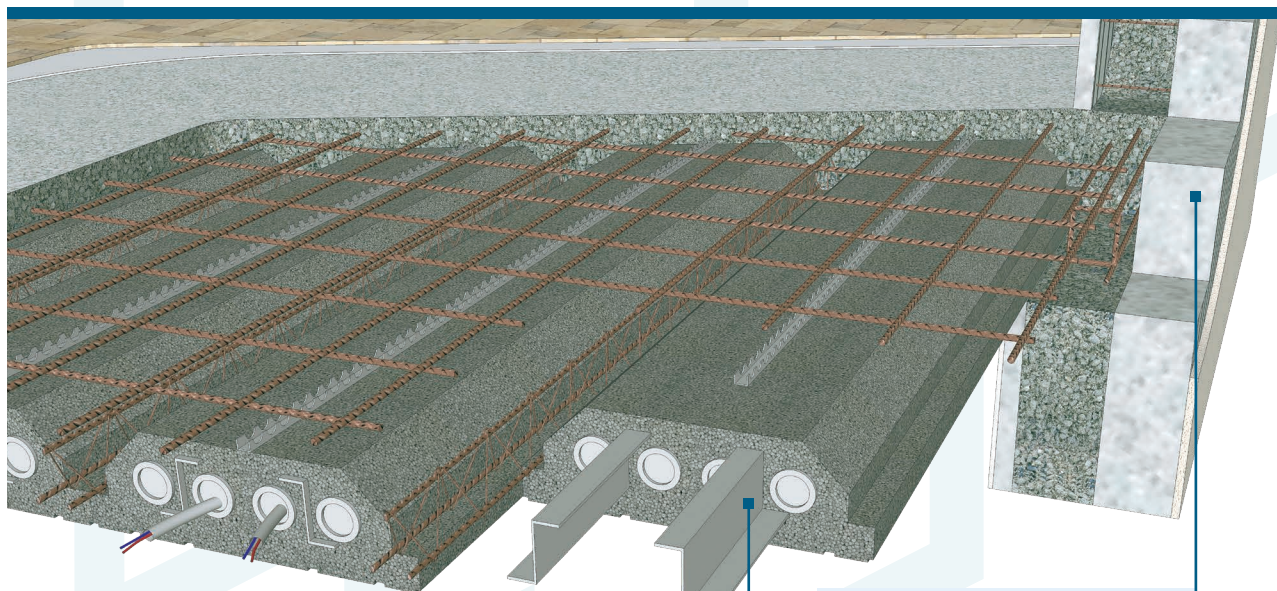
SIMULTANEOUS POURING

CASTING SLABS AND BEAMS
AT THE SAME TIME



NO LIFTING EQUIPMENT NEEDED

BEAMS: +/- 3 KG / M
FLOOR SLABS: +/- 5 KG / M



PLANEL

NO THERMAL BRIDGES

CARRIER PROFILE

SAFE MOVING

4 IN 1

IN ONE SIMPLE OPERATION, YOU CAN
CARRY OUT 4 COMPLEX OPERATIONS IN
TRADITIONAL CONSTRUCTION:

- ① FORMWORK LAYING
- ② INSULATION LAYING
- ③ AIR-TIGHTNESS
- ④ ELIMINATION OF THERMAL BRIDGES

THE EUROMAC2 ADVANTAGES

- ① FREE QUOTATIONS
- ② REBAR AND SLAB KIT
- ③ ON-SITE DELIVERY
- ④ ASSISTANCE AND TRAINING

EXCELLENCE IN INSULATION!

To comply with thermal regulations, use our **EUROMAC2** insulating formwork slabs. Remarkably light, offering excellent insulation, they are easy to install, with a **clear span of up to 8m** and a load-bearing capacity of **over 600kg/m²**. They are ideal for all types of floor in new construction or renovation.



EUROMAC2 WILL GIVE YOU AN ESTIMATE FOR YOUR PROJECT, AND PROVIDE FREE INSTALLATION PLANS AND STRENGTH CALCULATIONS FOR YOUR SLABS.

DATA TO BE TAKEN INTO ACCOUNT WHEN DEFINING YOUR SLABS:

- Operating loads: lump-sum value depending on building use (dwelling = 150 kg/m²).
- Permanent loads: these depend on the project and are either distributed (type of floor and covering, suspended or unsuspended ceiling, type of partitions), or point loads (staircase, chimney, Jacuzzi, etc.).
- Clear span: this is the distance between two primary walls (load-bearing, ...) or two secondary walls (intermediate beams, etc.).
- Terraces and roof terraces: attention to climatic overloads, waterproofing and landscaping.

EUROMAC2 INSULATING FORMWORK SLAB RANGE

STANDARD DATA > RESIDENTIAL TYPE WITH COMPRESSION SLAB

STANDARD SERIES

TOTAL HEIGHT OF HOURDI (IN CM) - * HEIGHT OF RISER	17	17 + 4* = 21	17 + 8* = 25	17 + 10* = 27
CLEAR SPAN	0 à 4,80 M	4,80 à 5,50 M	5,50 à 6,20 M	6,20 à 6,70 M ¹
SLAB WEIGHT (KG / ML)	5,00	5,30	5,55	5,70
THERMAL RESISTANCE $R_p - (m^2.K) / W$	2,86	2,99	3,07	3,15
THERMAL LOSS $U_p - W / (m^2.K)$	0,304	0,287	0,275	0,271
CONCRETE CUBING (in liter / m ²)	88	101	115	121
BEAMS WEIGHT (in kg / ml)	3	4	5	6

¹Please consult us for sizes over 6,70m.

TECHNICAL SPECIFICATIONS

BUILDING REGULATIONS AND TECHNICAL NOTICE	Procédé de plancher nervuré en béton armé à poutrelles préfabriquées en treillis métallique soudé, avec hourdis en polystyrène expansé avec dalle de compression coulée en œuvre.
EUROPEAN STANDARD	DTA 3.1/20-1022_V2
RATING - REACTION TO FIRE	EN 13163 : 2013
FIRE RESISTANCE	EUROCLASSE E
THERMAL CONDUCTIVITY OF EPS	F60 (avis N°GA-2013/204 réalisé par IBB)
	$\lambda_D = 0,031 W / (m.K)$

²Exposure classes to be adapted according to use

APPLICATION CHARACTERISTICS

TYPE OF CONCRETE	C25/30, S3-S4, Granulométrie 8-16mm ²
SUPPORT	According to installation plan

THE EUROMAC2 SLAB

MODULAR AND FLEXIBLE

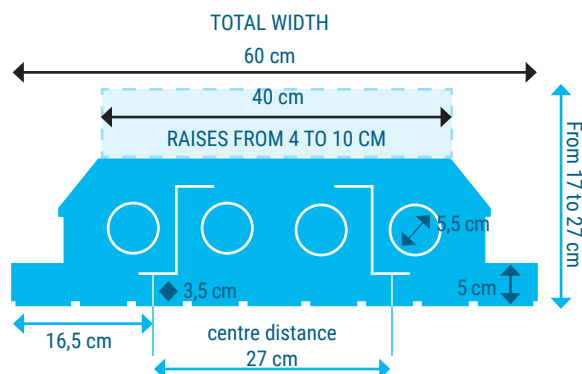
Easy to cut for adjustments

SIMULTANEOUS CASTING

Slab + beam in one go

QUICK AND EASY

Pouring once the reinforcement has been laid



OUR SOLUTIONS

ROOF-TERRACE SLAB

- Reduction of thermal bridges
- Airtightness
- Continuous insulation of walls and acroteria
- Solution for green roofs

FLOOR SLAB

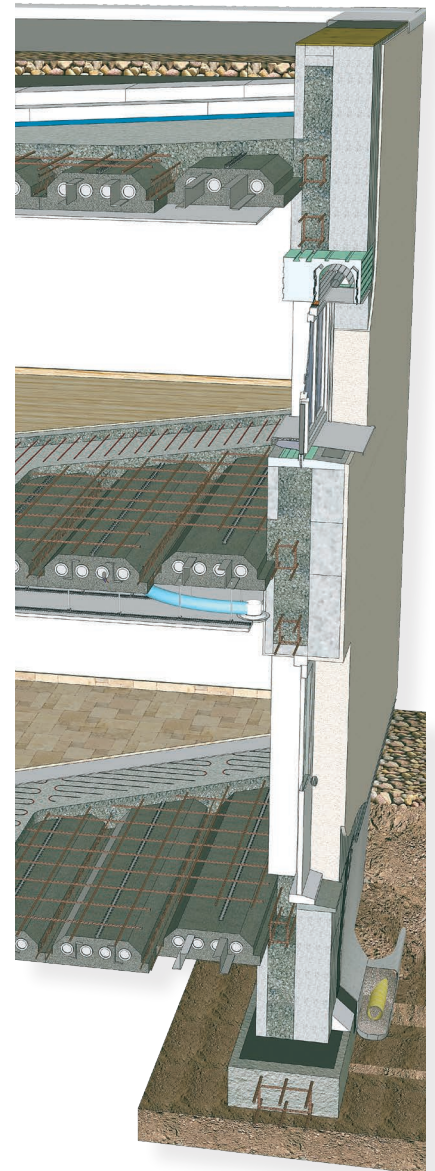
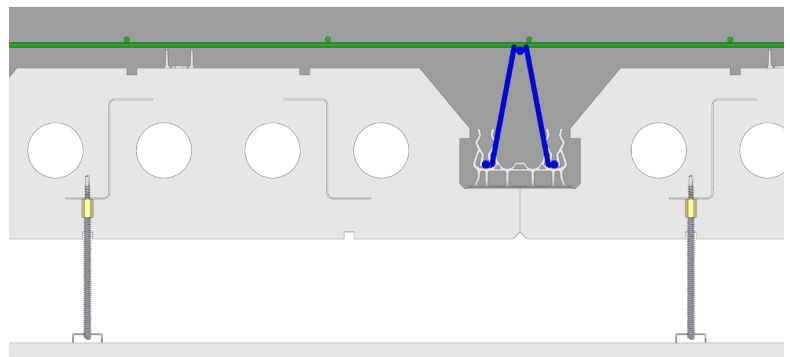
- Temperature management by level and room room, separating the day and night parts of the for better energy management
- Facilitates installation of false ceilings, ducts and lighting
- Allows all types of finishing (friezes, sprayed plaster and BA13)
- Facilitates the creation of reservations

CRAWL-SPACE SLAB

- A genuine thermal barrier for unrivalled comfort
- Installation on crawl space walls, reduced lead times, no special tools, savings on materials
- Suitable for seismic zones, flood zones, clay soil, mine damage, etc.

ADJUSTABLE FALSE CEILING

The adjusters, screwed into the metal Zs of the slab, allow precise adjustment of the false ceiling height. This solution guarantees a robust, adaptable installation that meets the specific requirements of each project.



BENEFITS OF EUROMAC2



- SIMPLE AND EASY TO HANDLE
- MECHANICAL RESISTANCE

- RAPIDITY
- LONG-TERM SAVINGS

- FLEXIBILITY OF USE
- HIGH-PERFORANCES



PLANS AND CALCULATIONS FOR YOUR SLABS IN ACCORDANCE WITH CURRENT FRENCH OR EU STANDARDS

LEADER IN HIGH-PERFORMANCE HIGH-PERFORMANCE BUILDING MATERIALS

SINCE 1976



8 RUE PHILIPPE CONSIGNY
57730 FOLSCHVILLER, FRANCE
Tél : +33 387 29 02 93
contact@euromac2.com

DISCOVER OUR OTHER DOCUMENTATION

EUROMAC2
CONSTRUCTIONS PERFORMANTES

**BLOCS COFFRANTS
ISOLANTS À BÉTON**
POUR CONSTRUCTIONS HAUTE PERFORMANCES

POINTS TECHNIQUES RELEVÉS
- ÉTANCHÉITÉ MAXIMALE À LONG
- ISOLATION THERMIQUE ÉLEVÉE
- SOLIDITÉ THERMIQUE ÉLEVÉE
- COMPLIANCE DE PRÉCIS

EUROMAC2
CONSTRUCTIONS PERFORMANTES

CSTB

WALLS

EUROMAC2
CONSTRUCTIONS PERFORMANTES

**PANNEAUX DE
TOITURE ISOLANTS**
POUR CONSTRUCTIONS HAUTE PERFORMANCES

ISOLATION THERMIQUE
ÉLEVÉE
- ÉTANCHÉITÉ MAXIMALE
- SOLIDITÉ THERMIQUE ÉLEVÉE
- COMPLIANCE DE PRÉCIS

EUROMAC2
CONSTRUCTIONS PERFORMANTES

CSTB

ROOF



EUROMAC2 it's more than 20,000 projects.

More than **50 employees** provide support to professional and private customers throughout France and Europe.

